

5.0 Megapixel USB 2.0 Camera

Model: ZC505

- 2592 x 1944 pixels
- USB powered
- Connects directly to laptop or desktop computers with USB 2.0
- Windows (32 and 64 bit) and MAC compatible (with optional MAC software)
- Includes PC software to capture still images and movies, with labeling, annotation and measurement.

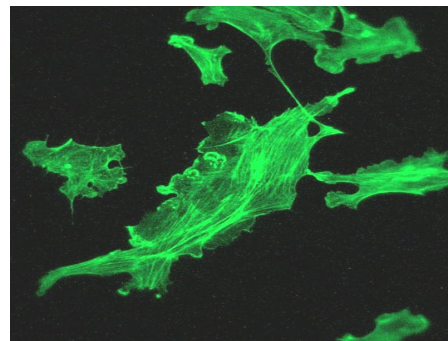


A compact, scientific quality camera for machine vision or microscopy, the ZC505 is fully DirectShow[®] compliant and installs without drivers on Windows (32 and 64 bit) and Macintosh Snow Leopard computers. The 2592 x 1944 pixel array updates at 3 frames/sec. (20 frames/sec. at 800 x 600 pixels.) A single cable simplifies connecting the camera to any desktop or laptop computer with a USB 2.0 port. Since the ZC505 is fully powered from the USB 2.0 port, it is the perfect choice for mobile imaging applications.

The ZC505 camera includes Video ToolBox Pro software, which provides full control over the camera, an easy-to-use interface for image capture, and advanced labeling, annotation and measurement features. An optional programmers DLL allows for remote software control in Basic or C/ C++, as well as National Instruments' LabVIEW[®].

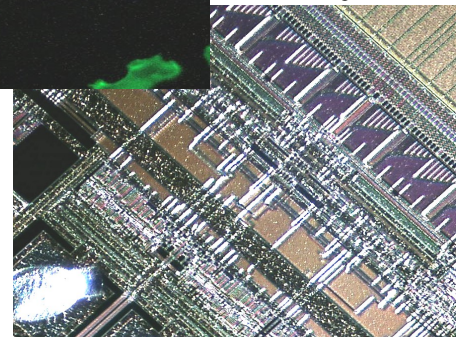
Applications:

- Microscopy (brightfield, darkfield, fluorescence)
- Video Documentation
- Surveillance and Security
- Mobile Imaging
- Photo ID Systems
- Telemedicine
- Video conferencing and webcasting



Fluorescence microscopy

semiconductor inspection



Specifications:

| | |
|----------------------|----------------------------------|
| Sensor Type: | CMOS |
| Sensor Size: | 4.73 mm × 3.52 mm (1/2" type) |
| Pixel Size: | 2.8 μ × 2.8 μ |
| Array Size: | 2592 x 1944 |
| Fixed Pattern Noise: | < 0.03% |
| S/N Ratio: | 42.3 dB |
| Min. Illumination: | 0.5 lux (with IR filter removed) |
| Bits per Pixel: | 8 (per color component) |
| Frame Rate: | 3 (max. full frame) |
| Shutter: | rolling, progressive scan |
| Gain: | manual or automatic |
| Lens Mount: | C or CS |
| Camera Housing: | Anodized aluminum |
| Camera Body Size: | 45 (h) x 45 (w) x 58 (d) mm |
| Camera Weight: | 128 g (w/out lens) |
| Mounting: | 1/4" threaded socket |

Computer Requirements:

- Windows XP/VISTA/7/8 (32 or 64 bit), MAC OS X 10.6+
- Free USB 2.0 Port
- DirectX 8.1 or greater (for Windows)
- Pentium IV 1.6+ GHz (i Core 1.5+ GHz recommended)
- 1+ GB of Free Memory (2+ GB recommended)
- Video card with 64+ MB of video RAM, minimum 800 x 600 resolution at 16-bit (65,000 colors)



1240 Sussex Turnpike, Suite 5, Randolph, NJ 07869
Phone: 973-933-2043 Fax: 973-933-2336
sales@zarbeco.com www.zarbeco.com